

Topic: Cells

Lesson	Lesson Title
1	Microscopes and Magnification
2	Animal Cells
3	Plant Cells
4	Unicellular Organisms
5	Specialised Cells
6	Tissues, Organs, Systems, Organisms

The 6 links below take you to The Oak National Academy Lessons for each lesson in the table above. The video lessons include tasks which are clearly explained.

<https://classroom.thenational.academy/lessons/microscopes-74wkat>

<https://classroom.thenational.academy/lessons/animal-cells-chh62c>

<https://classroom.thenational.academy/lessons/plant-cells-6cwpcd>

<https://classroom.thenational.academy/lessons/unicellular-organisms-6cuk0r>

<https://classroom.thenational.academy/lessons/specialised-cells-c8tpcr>

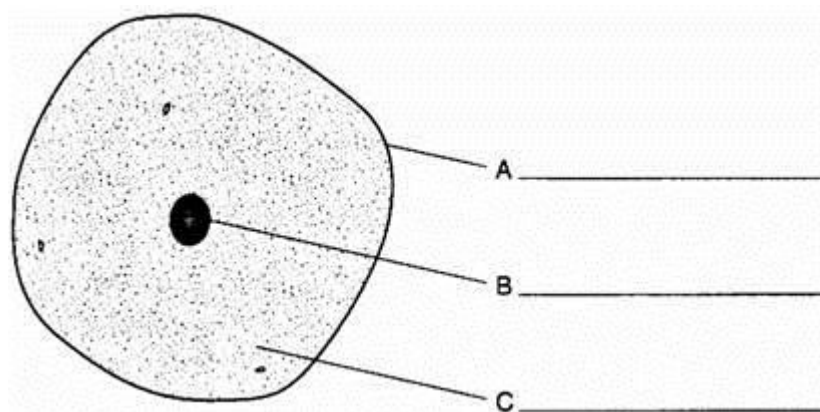
<https://classroom.thenational.academy/lessons/animals-as-organisms-6hgk8c/activities/1>

Questions for you to complete.

Q1.

The diagram below shows a cell from the inside of a human cheek.

- (a) On the diagram, label parts A, B and C.



3 marks

- (b) Plant cells have some parts which animal cells do **not** have. Name **two** of these parts.

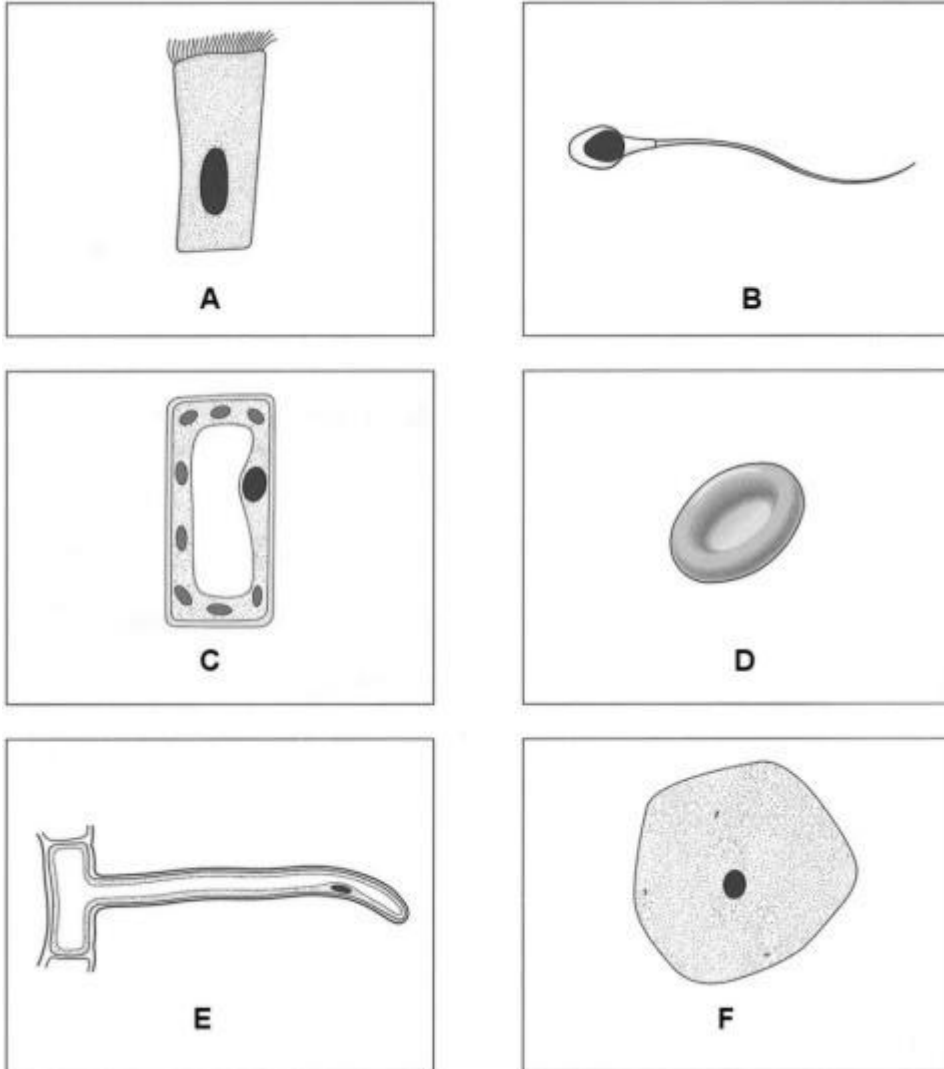
1.

2.

2 marks
Maximum 5 marks

Q2.

The diagram below shows six cells.



(a) (i) Give the letters of the **two** plant cells in the diagrams.

..... and

1 mark

(ii) Which **one** of these plant cells contains chloroplasts?
Give the letter.

.....

1 mark

(iii) Give the function of chloroplasts.

.....

.....

1 mark

(b) (i) Give the letter of the ciliated cell.

.....

1 mark

(ii) In which part of the body are ciliated cells found?

.....

1 mark

(iii) What is the function of ciliated cells in this part of the body?

.....

.....

1 mark

(c) Give the letter of the cell which transfers genetic information from father to offspring.

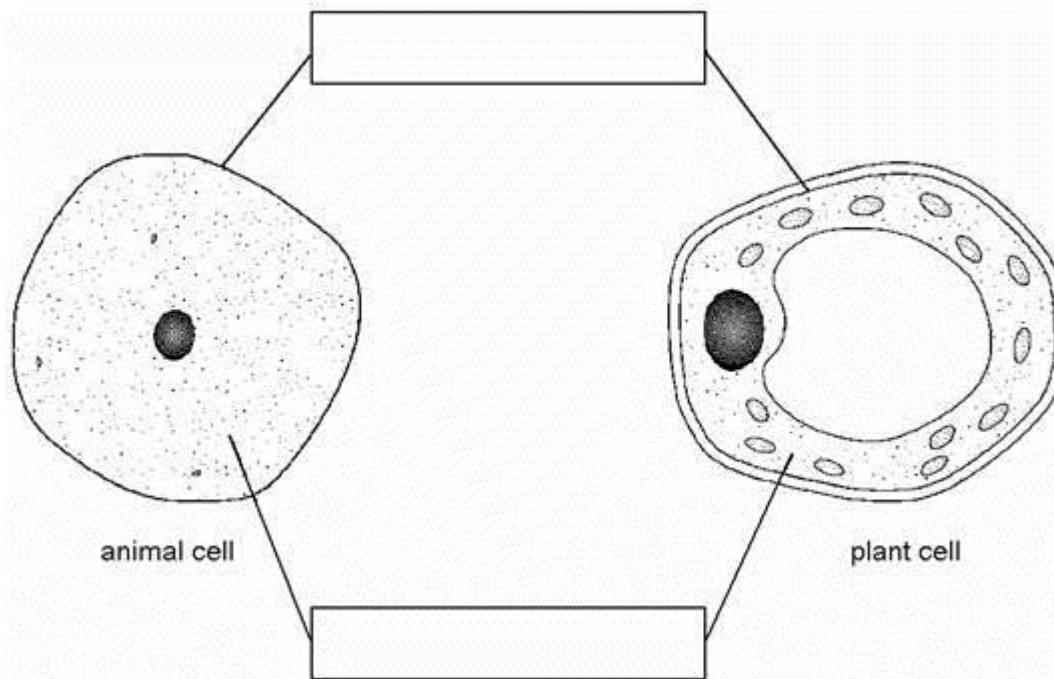
.....

1 mark

maximum 7 marks

Q3.

(a) The diagrams below show an animal cell and a plant cell.



(i) The lines from the boxes show the positions of two of the parts that are present in both cells.
In the boxes, write the names of these **two** parts.

2 marks

(ii) Give the names of **two** parts which are present in plant cells but **not** in animal cells.

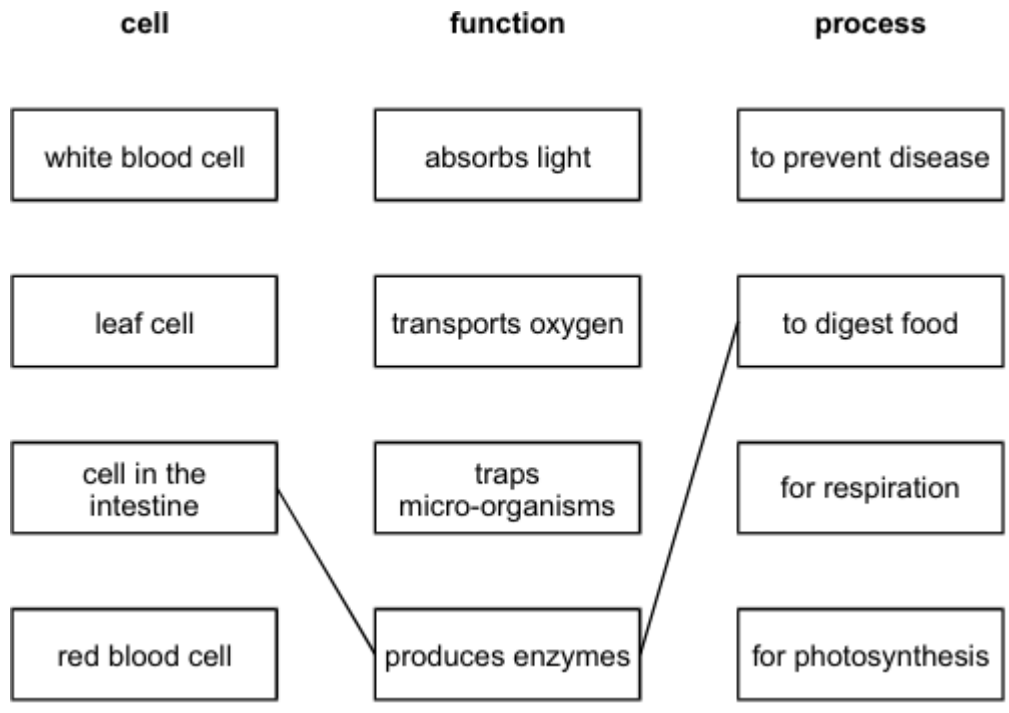
1.

2.

2 marks

(b) Organs can carry out their functions because of the special cells they have.

Draw a straight line from the name of each type of cell to the function of the cell and then to the process it carries out.
One has been done for you.



3 marks
Maximum 7 marks