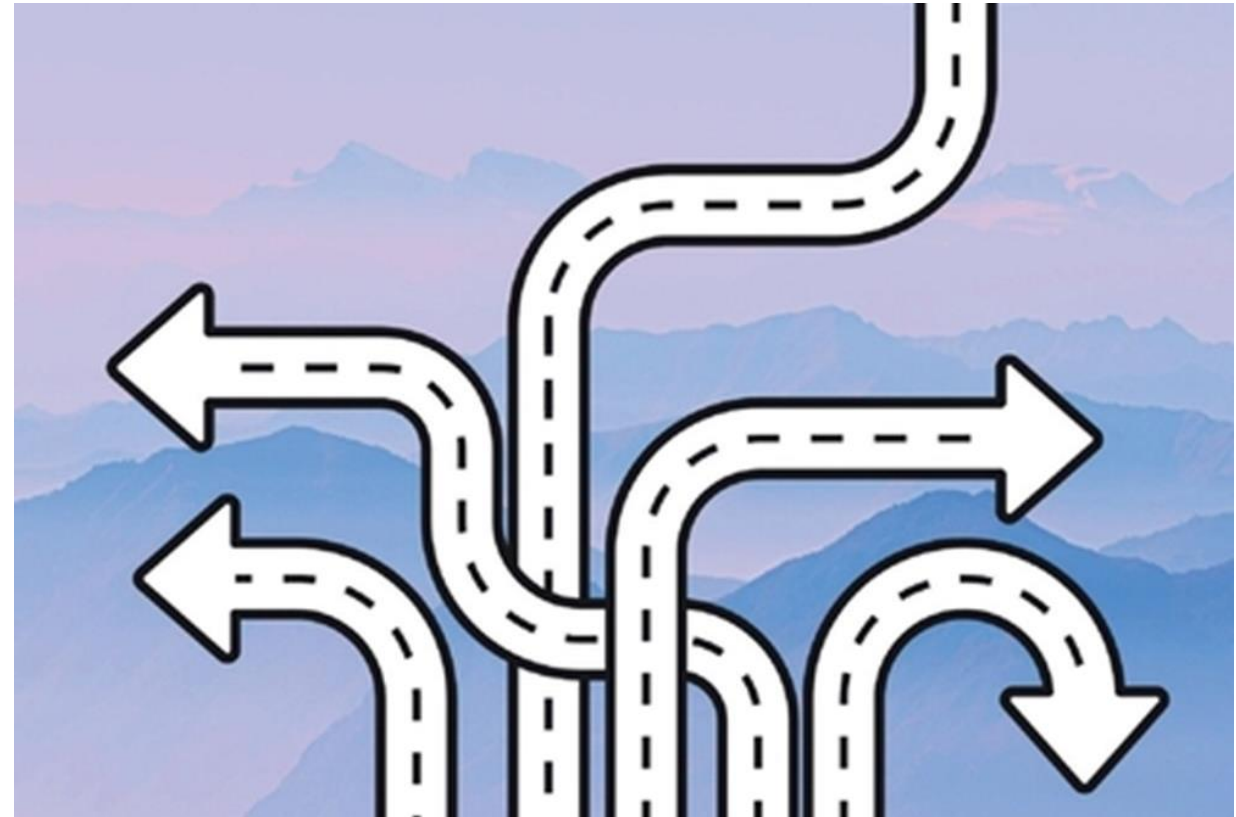
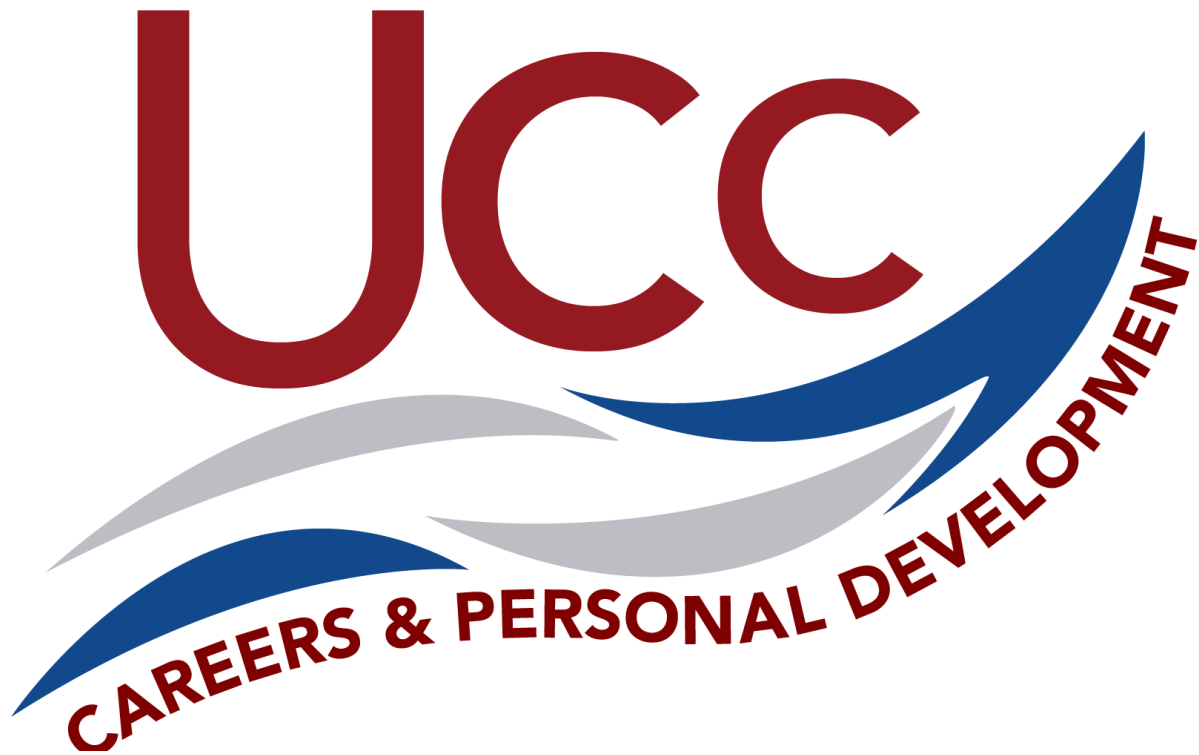


# Year 11 Post-16 Information Evening

CAREERS & PERSONAL DEVELOPMENT

# A Careers Journey



# Provision

- PDE – Careers Pathway
- Job of the Week including LMI
- Additional Curriculum Experience Days
- Group Sessions with Cheryl (Year 9/10)
- Meaningful Encounters with Employers
- Subject Career Opportunities

# Upcoming

- 1:1 with Cheryl (Every Year 11 Student)
- Post-16 Providers/Options in Assemblies
- Post-16 Evening (October)
- Careers in the Curriculum Lessons

# Post-16 Options

- A Levels
- B-Tec
- T-Level
- Apprenticeship
- All Pathways lead to University
- Everyone must stay in education or training until the age of 18.

# Applications

- Need to start researching and visiting providers.
  - Applications are made directly to colleges and sixth forms.
  - Our deadline is end of December, colleges say end of January
  - Leicestershire applications, apart from Robert Smyth, you need to use the PS16 portal for all applications.
- 
- Most providers will ask for a personal statement
  - An interview may be required
  - Predicted grades are used on the application forms (these will come from students first report of the academic year)

# Key Messages

- Decision Making
- Plan A and Plan B
- Find what works for you
- Research
- Personal Profile v Academic Profile





