

Understanding POST 16

June 2021

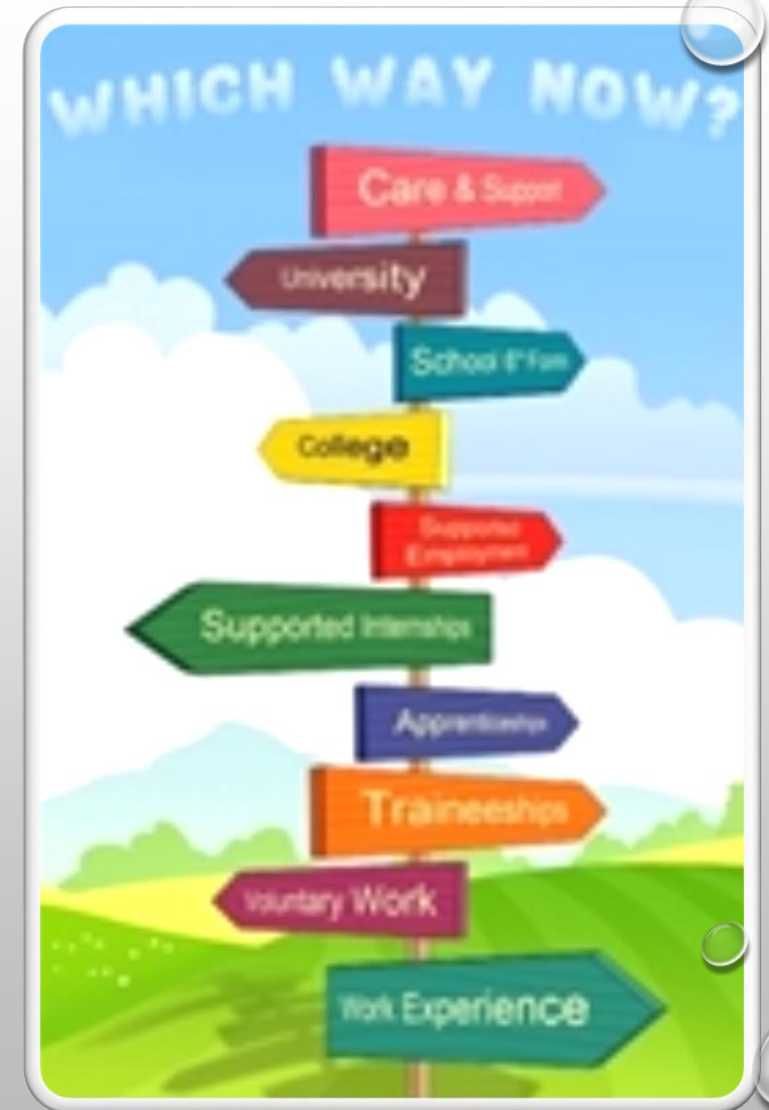


Year 10

By the end of Year 10 you will be expected to have an idea about the subjects, schools and colleges that you wish to apply for, **BECAUSE** at the start of Year 11 you will be expected to make your applications.

The application process tends to start from the beginning of November and most Post 16 providers like all applications to be completed by Christmas.

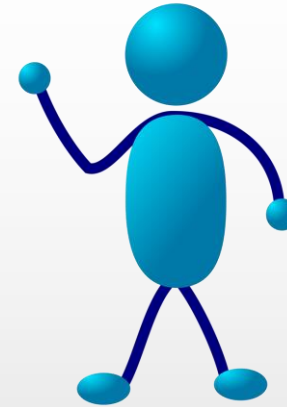
Planning for your POST 16 choices does not need to be daunting - you just need to be prepared and do your research. It may seem too early to start thinking about the process but realistically the process starts for you in a few months ... so not that far away!



How do I know what to choose for POST 16?

What is the best option?

What if I don't know what job I want to do?



In truth it's all about YOU!

You are you, you are unique, you have skills and qualities,
you have passions, you are not the same as the person
next to you ... what might suit others might not be right
for you.

The key is that you choose the option that is going to
bring you the best results for you.



Determined

Impulsive

Leader

sporty

Practical

Artistic

lazy

Sciencey

Creative

Hands-on

Introvert

Literate

Caring &

Outspoken

supportive

Funny

Extrovert

Tech Wizz

Determined

Impulsive

Leader

Practical

Key

Ca

supportive

Funny

Extrovert

Tech Wizz

First things first

... you need to find YOU!

So ... what's on offer?

A v B v A

and now even

T

Apprenticeships - Btecs - Advanced (A) Levels - Technical (T) levels

Advanced 'A' level study

MOST A-levels now depend solely on exams you take at the end of your second year.

There are however, some exceptions -



Creative subjects still tend to have an element of coursework



Chemistry, Biology and Physics, include a practical element throughout the course

The 'A' level entry requirements for university entry is 3 'A' levels but some students do choose to do 4
POST 16 providers generally expect grades at GCSE of 5 and above, some even ask for 6-7 and above!

Advanced Level – A level study

- 'A' levels have gone through some changes recently moving from ongoing module assessments to 100% final exams, and so are termed 'linear' (there are some exceptions e.g. Art). 'A' levels tend to be the more traditional subjects with limited practical content. They are assessed by final exam at the end of two years of study.

Signs that 'A' levels might be the right choice for YOU ...

You like the traditional subjects

You prefer exam-based study

You perform better in exams

You want to keep your options open (3-4 subjects)

You have the correct entry requirements

You want to go to University

You want to do a Degree Apprenticeship

You want to enter the working world after you finish in Year 12

What are BTECs?

A BTEC, or 'Business and Technology Education Council' (the name of the body which originally oversaw it) is a practical-based, vocational qualification that can be studied at a college or school.

BTECs provide the opportunity to gain hands-on experience in a field or subject, and are a viable alternative to the more theory-focused, classroom-based ways of learning which you might be put off by.

BTECs are becoming a more popular path to both university and particular jobs in place of, or in addition to, 'A' levels.

In 2015, 26% of students accepted on to a university course held at least one BTEC, but according to University and College Admissions Service (UCAS) this has now more than doubled (2019).

While they are commonly known as an alternative to 'A'-levels, BTEC qualifications can actually be studied at a number of levels including GCSEs and even degrees

Level 1 - no specific entry requirements

Level 2 - Grade 2-3 in four GCSEs

Level 3 - Grade 4 and above in 4-5 subjects (must include English & Maths)

Level 4 - first year of a degree

Level 5 - second year of a degree

Level 6 - final year of an undergraduate degree

Level 7 - Masters Degree

BTecs can be studied across a range of subjects and can equate to one, two or three 'A' levels

Signs that 'Btecs' might be the right choice for YOU ...

You prefer coursework and continual assessment (may be some end of module tests)

You don't want to study more than one subject (OR you DO)

You like hands-on and practical learning

Your predicted grades are below Grade 5 (or above Grade 5)

You don't want to go to university

OR

You DO want to go to university

You like the idea on work experience

L3 EXTENDED/ADVANCED Diploma - 3 'A' levels

L3 Diploma = 2 'A' levels

L3 Certificate = 1 'A' Level

Sport
Food & Nutrition
Media
Business
Health & Social Care
Mechanics
Trades

Animal Care
Music
Art & Design
Textiles
Countryside Management
Farming
Construction

... and many more

Apprenticeships - What are they all about? Are they right for you?

Apprenticeships are created when a business (company) and attaining provider (college) come together to design and implement a training plan which allows an individual the opportunity to learn on the job and gain a recognised qualification. Many young people AND companies prefer this method as it allows a company to train the individual in a 'hands-on, practical and focused way.

Apprenticeships are available at different levels BUT the basic Intermediate apprenticeship requires a **MINIMUM** of 4 to 5 GCSEs (at grade 4 and above) which **MUST** include Maths and English.

Name	Level	Equivalent Educational Level
Intermediate	2	5 GCSE passes at 4-9
Advanced	3	2-3 A level /L3 Btec or Ebac passes
Higher	4,5,6 & 7	Foundation Degree and above
Degree	6 & 7	Batchelors & Masters Degree

Apprenticeships combine practical work-based learning and educational training.
They offer a wage throughout.

A chance to EARN while you LEARN

Apprenticeships come in a number of levels starting at level 2 (GCSE) up to level 7 Masters
Degree level

Wages

Age	Min wage – per hour
16-18	£4.30 (NMW - £4.62)
19+ in year one	£4.30
19+ in year two+	£6.45 (NMW - £6.56)
21+ in year 2+	£8.20 (NMW £8.36)
25+ in year 2+	£8.72 (NMW £8.91)

Apprenticeships and COVID

Revealed: Covid-19 hit to apprenticeship starts!

The dramatic impact of the coronavirus crisis on apprentice recruitment is laid bare for the first time in a survey of over 300 providers.

Responding to an FE Week request for data on the last day of April, 304 providers said they had between them planned 13,732 starts in the month but only achieved 2,693, missing their pre-coronavirus expectations by 80 per cent.

The impact on apprenticeships ... don't worry it's not all bad news!

Technical 'T' levels - 2020/21

'T' Levels are new courses which follow on from GCSEs and are equivalent to 3 'A' levels.

These 2-year courses, which launched September 2020/21, have been developed in collaboration with employers and businesses so that the content meets the needs of industry and prepares students for work, further training or study.

'T' Levels offer students a mixture of classroom learning and 'on-the-job' experience during an industry placement of at least 315 hours (approximately 45 days).'

Due to the Covid pandemic and lockdown some 'T' level courses have been pushed back to September 2021.

'T' levels will come with UCAS (university points)

'T' Levels subjects - available NOW



- accounting
- agriculture, land management and production
- animal care and management
- catering
- craft and design
- design and development for engineering and manufacturing
- design, surveying and planning for construction (now available)
- digital production, design and development

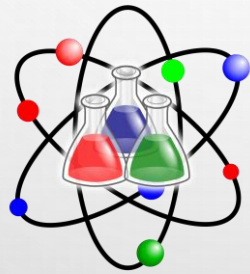


- finance
- hair, beauty and aesthetics
- human resources
- legal
- maintenance, installation and repair for engineering and manufacturing
- management and administration
- engineering, manufacturing, processing and control
- media, broadcast and production



'T' Levels subjects - available September 2021

- building services engineering for construction
- digital business services
- digital support & services
- health
- health sciences
- onsite construction
- science



NOT all colleges will offer all subjects as it will depend on the facilities different courses require.

Look on your local college websites to find out more!

www.startprofile.com



REMEMBER - you registered on this school careers platform last year so should just be able to log in!

YOUR login details should be your **SCHOOL** username and password – if you cannot remember it then re-register

The code for students at UCC is 25174

Teachers - if not registered go on the platform as a guest



What schools/colleges are around here?

- Tresham College
 - Stamford College
 - Peterborough College
 - Leicester College
 - South Leicestershire College
-
- Wyggeston Queen Elizabeth (WQE), Leicester
 - Beauchamp City 6th Form, Leicester
 - Harington School
 - Melton Vale 6th Form, Melton
 - Robert Smyth Academy, Market Harborough
 - Catmose College, Oakham
 - John Fernley, Melton
 - Kings, Peterborough
- 

So, the BIG question ... Which is the BEST one?

Well in reality the BEST one for you is the one that you are going to achieve the best at!

What do you need to ask yourself in order to know the answer to this?

- Do I perform better with exams or coursework?
- Do I have the correct entry predictions for my chosen option?
- What is my long-term career goal (some jobs require a degree others don't)?
- What style of learning suits me (practical/hands-on)
- How far am I prepared to travel? How long will my journey take/cost?
- Am I following the crowd or making the correct decision for me?
- Have I talked this through with my family?
- How far away from my target grades am I?
- What do I need to do to achieve my best?
- Do I have any barriers to learning/success?