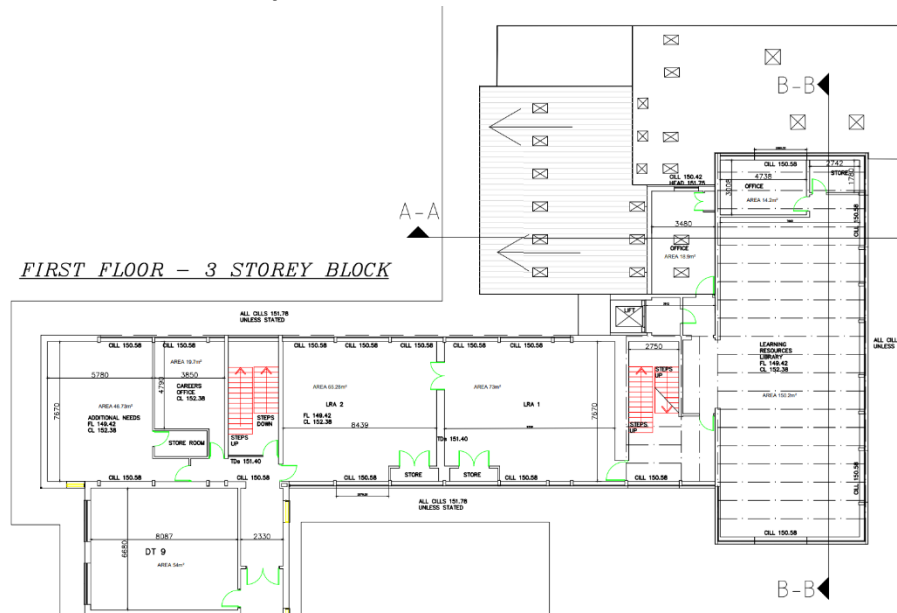


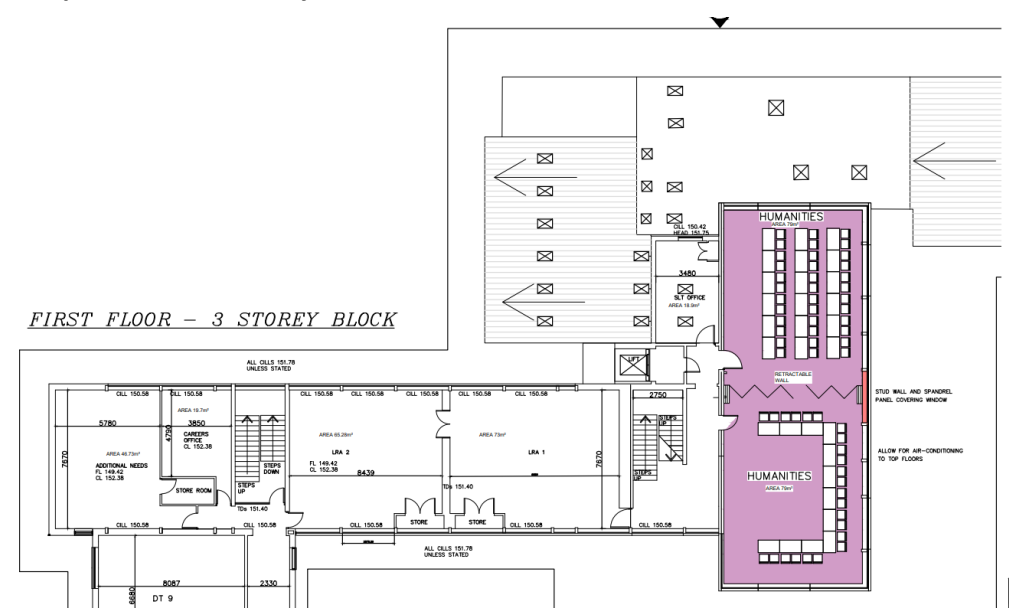
[illegible][illegible]

- New 134m<sup>2</sup> Fitness Suite created
- English department workspace created to enable greater collaborative working within the team
- 2 English classroom relocated and have already been established – these are larger, brighter and better teaching rooms
- PE office expanded to enable greater collaborative working within the team
- Changing rooms reinstated rather than remodelled so that funds invested are focussed on learning spaces for students

## Current First Floor Layout

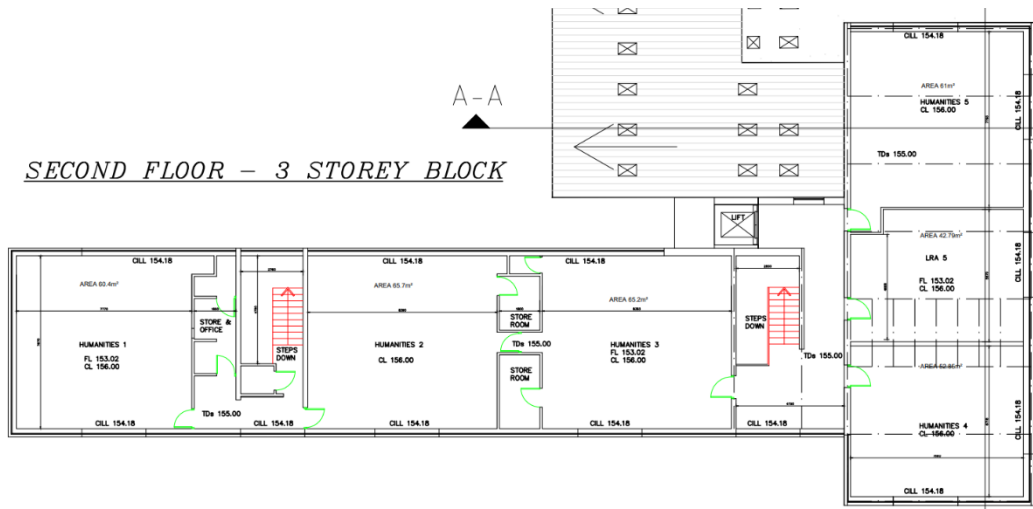


## Proposed First Floor Layout

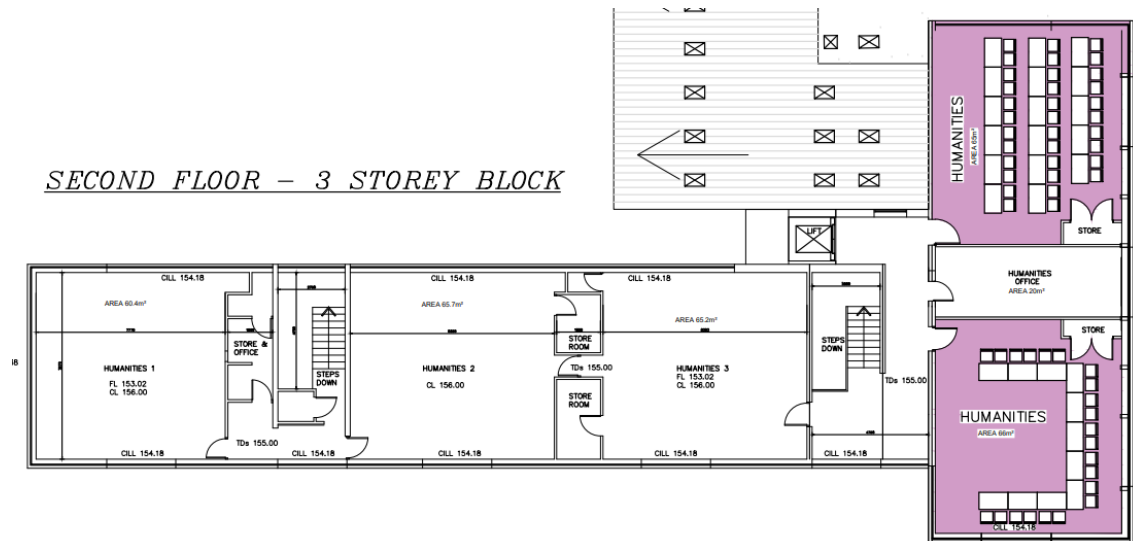


- SLT office reinstated
- 2 large Humanities classrooms established in place of the library and 2 offices – this prioritises learning spaces for students and creates a showcase facility for teaching and learning which features a retractable wall
- Library is replaced with a Reading Hub in a new large English classroom, where electronic devices hold a regularly updated body of literature titles for students to access.

**Current Second Floor Layout**



**Proposed Second Floor Layout**



- 2 Humanities classrooms are expanded to create larger and better teaching spaces
- Humanities department workspace created to enable greater collaborative working within the team
- Computer room (HU5) that has not been reinstated will be replaced with a laptop trolley allowing for greater flexibility for students and staff